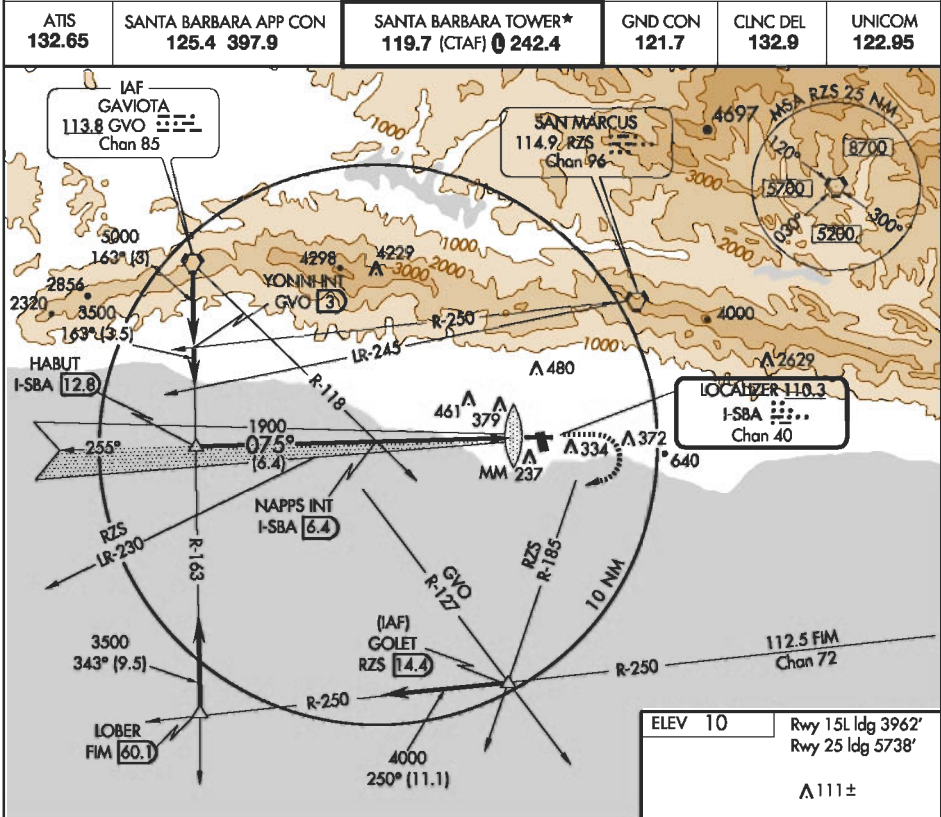


ILS RWY 7
SANTA BARBARA MUNI (SBA)

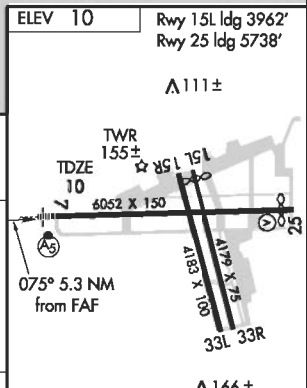
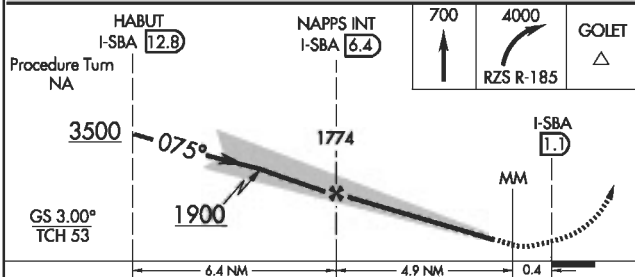
LOC/DME I-SBA 110.3 Chan 40	APP CRS 075°	Rwy ldg 6052 TDZE 10 Apt Elev 10
--	------------------------	---

	For inoperative MALS/R increase S-LOC 7 Cats A and B visibility to RVR 5000.	MALS/R 	MISSED APPROACH: Climb to 700, then climbing right turn to 4000 via RZS R-185 to GOLET Int.		
	ATIS 132.65	SANTA BARBARA APP CON 125.4 397.9	SANTA BARBARA TOWER* 119.7 (CTAF) 0 242.4	GND CON 121.7	CLNC DEL 132.9



SW-3, 29 SEP 2005 to 27 OCT 2005

SW-3, 29 SEP 2005 to 27 OCT 2005



CATEGORY	A B C D			
	S-ILS 7 210/24 200 (200½)			
S-LOC 7	460/24	450 (500-½)	460/40 450 (500-¾)	460/50 450 (500-1)
CIRCLING	760-1 750 (800-1)	760-1¼ 750 (800-1¼)	760-2¼ 750 (800-2¼)	960-3 950 (1000-3)

ELEV 10		Rwy 15L ldg 3962'		Rwy 25 ldg 5738'	
A 111 ±					
TWR 155 ±					
TDZE 10					
6052 X 150					
075° 5.3 NM from FAF					
A 166 ±					
HIRL Rwy 7-25					
MIRL Rwy 15R-33L					
REIL Rws 15R and 25					
FAF to MAP 5.3 NM					
Knots	60	90	120	150	180
Min:Sec	5:18	3:32	2:39	2:07	1:46